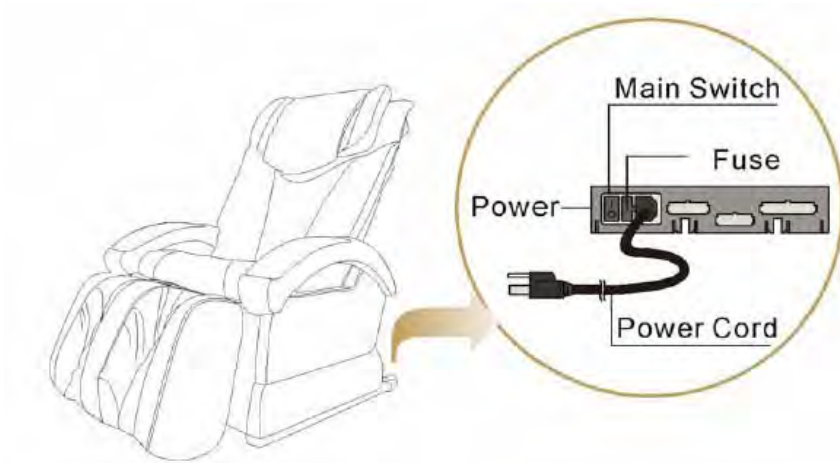


Elite Triumph Remote Control IC Replacement

For questions, clarifications or assistance call 800-592-0548 X 1

Tools required: Phillips screwdriver #1 size tip

BEFORE BEGINNING turn the main switch off as illustrated below and unplug the power cord.



Allow the chair to sit for 10 minutes before proceeding.

Step 1): Locate your remote and flip it over to expose the back.

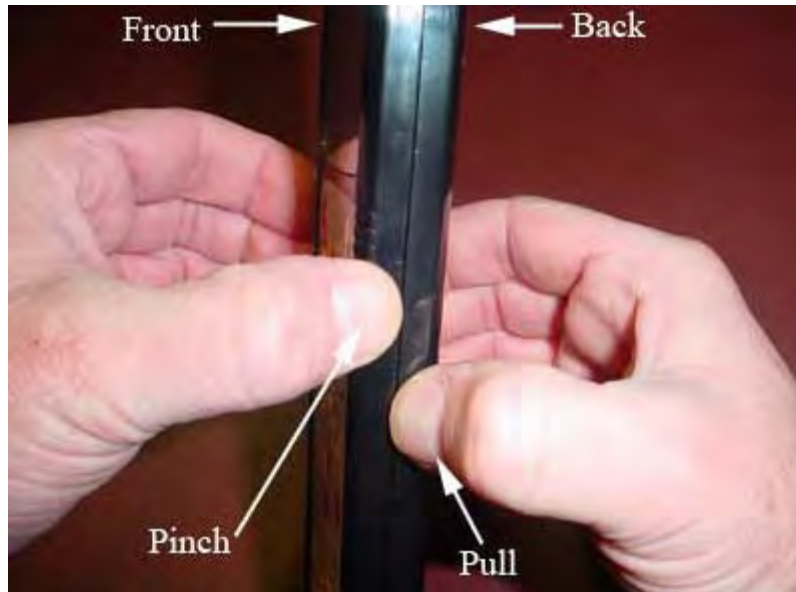


Remove the two screws 1) and set aside 2) (don't lose them)

Step 2): Turn your remote over and locate the ridges (circled below).



Step 2a): To separate the two halves pinch the locations as described below.



Pinch the front half in the location indicated in step 2 with your left thumb and forefinger and pull the back half apart with your right hand.

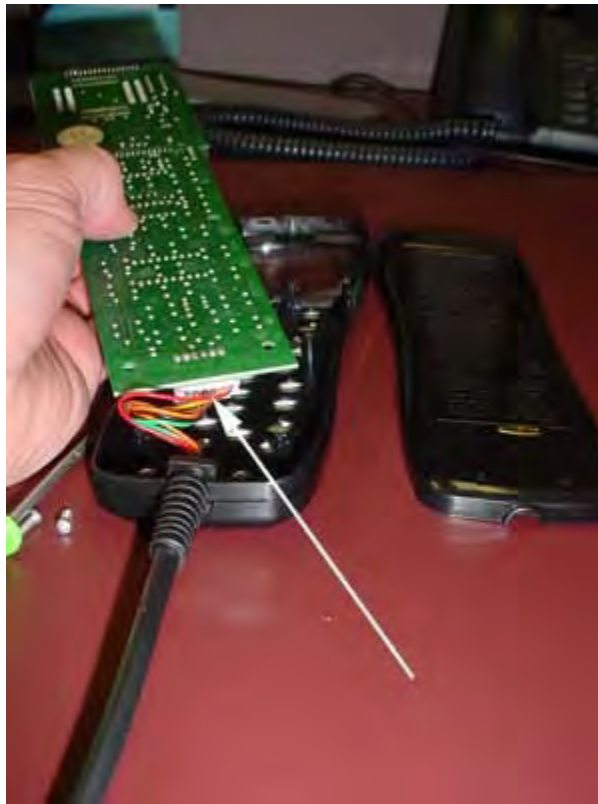
Step 3): Lay the front half of the remote flat on its face and set the back half aside as shown below. Remove the two screws 1) and set aside 2) (don't lose them).



Step 4): Carefully remove the IC board from the front of the remote



Step 5): Locate the connection from the cable to the IC board as shown below.



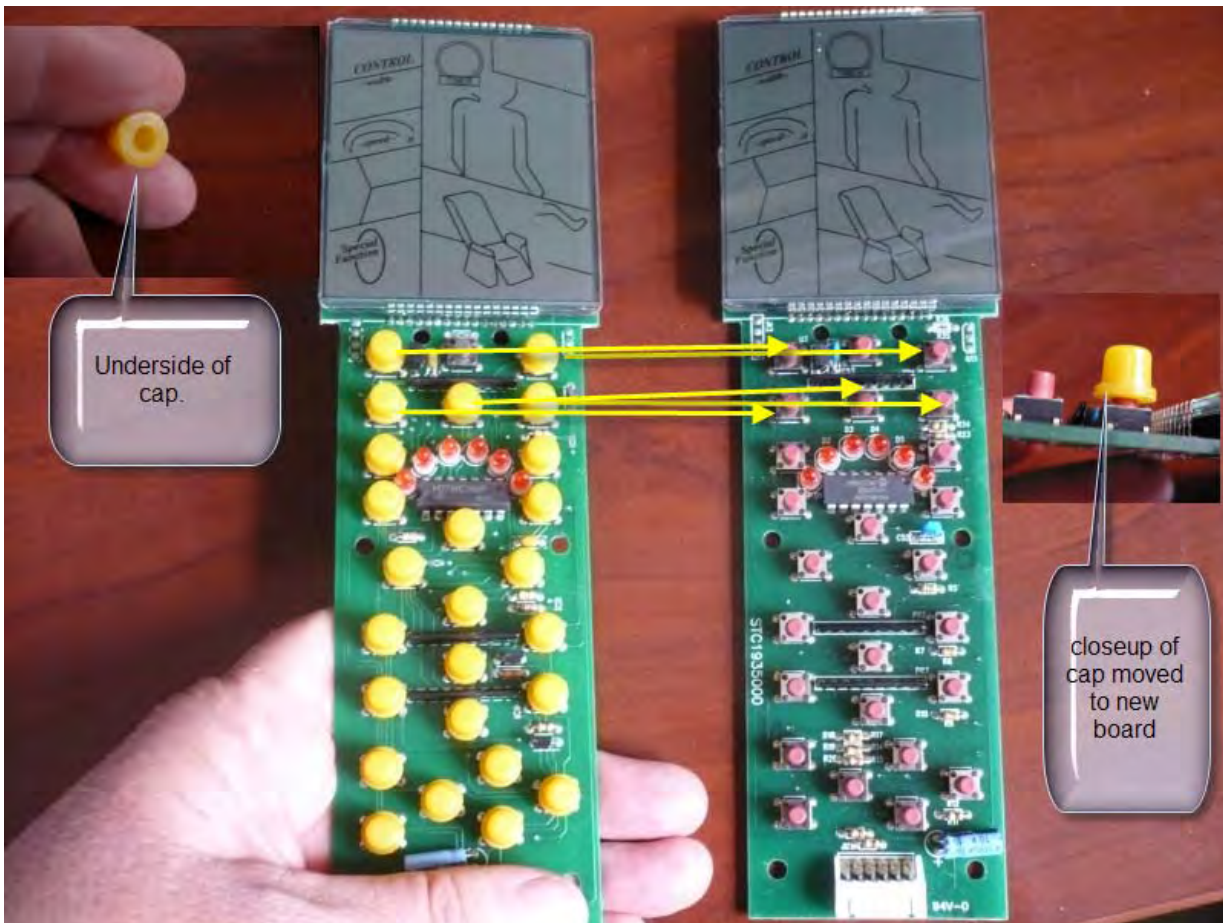
Step 6): Carefully remove the cable from the board holding the white plastic connector; you may have to wiggle it back and forth. Remember the location and colors of the wires. In this diagram, green is shown on the left, red on the right.



Step 7): The IC board will now be free from casing and cable.



Step 8): Lay face up with new board next to it. Remove the yellow “hats” from the old IC board and press firmly onto same position of new IC board.



Step 9): Follow the instructions in reverse to reconnect board to cable and install board back into casing.

Give us a call at 1-800-592-0548 x 1 if you experience any difficulties or need additional help.