

Elite Optima Armrest removal Instructions:

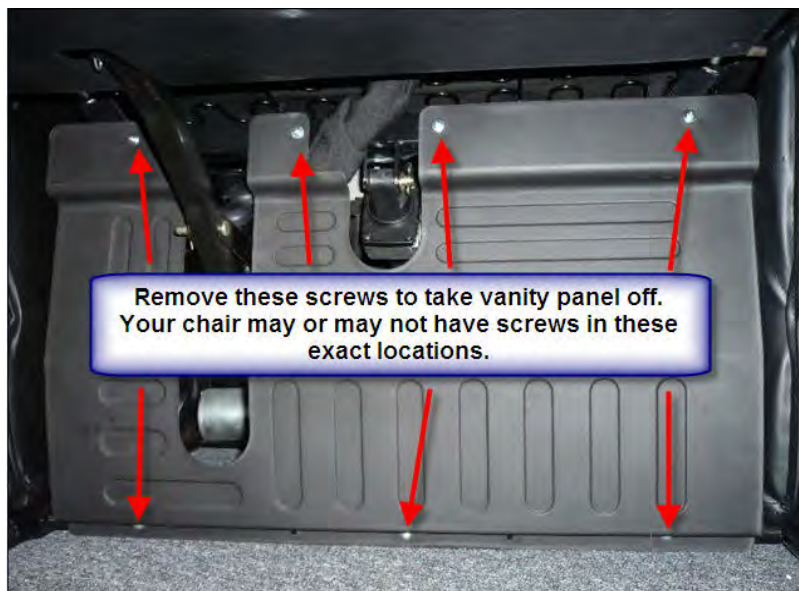
For questions, clarifications or assistance call 1-800-592-0548 x 1

Tools required: Phillips screwdriver, 5mm Allen wrench

Step 1) Raise footrest up all the way and lock into place by pushing up on the bar located on the left side (facing chair) directly below the foot massage.



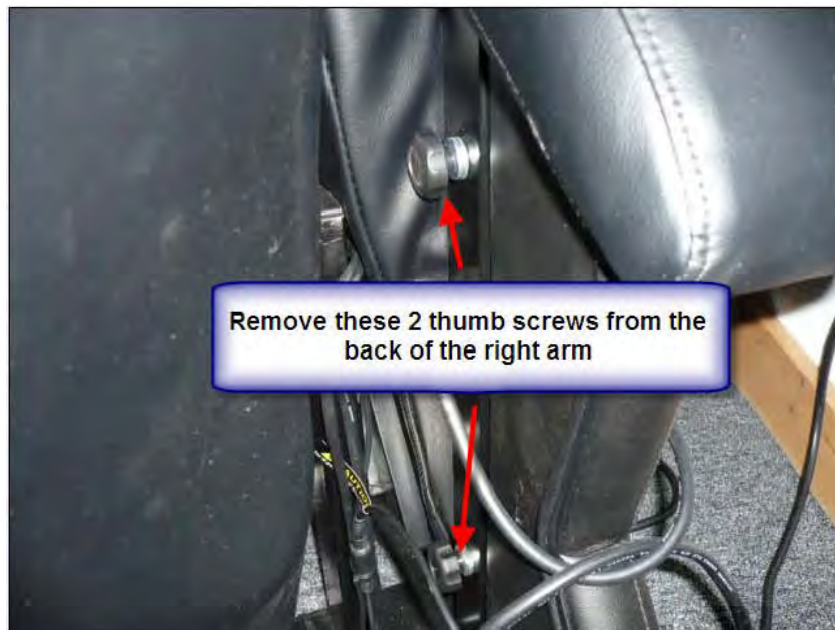
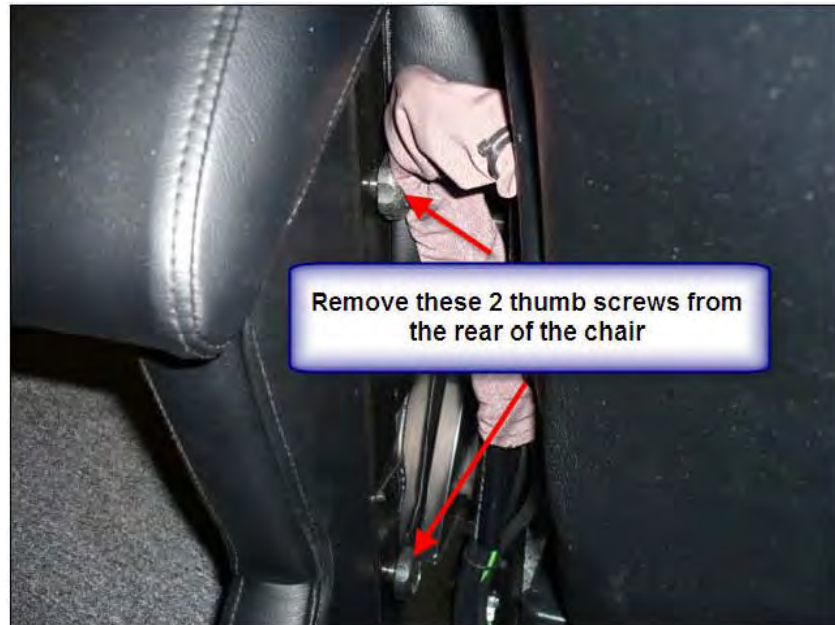
Step 2) Remove the Phillips screws holding the vanity panel onto chair and remove panel.



Step3) Remove the thumb screws located behind the left and right armrests.



Step 4) Remove the 2 thumbscrews from each side at the rear of the chair and pull the insert free. Note if you installed the remote controller stand please follow those instructions to remove the stand before attempting to remove the armrest insert.



Step 5) Remove the 4 Allen bolts with the 5mm Allen wrench and lift the armrests off of the chair frame.



